

# Restoration House of Greater Kansas City 2021 Annual Report

## Education/Certifications

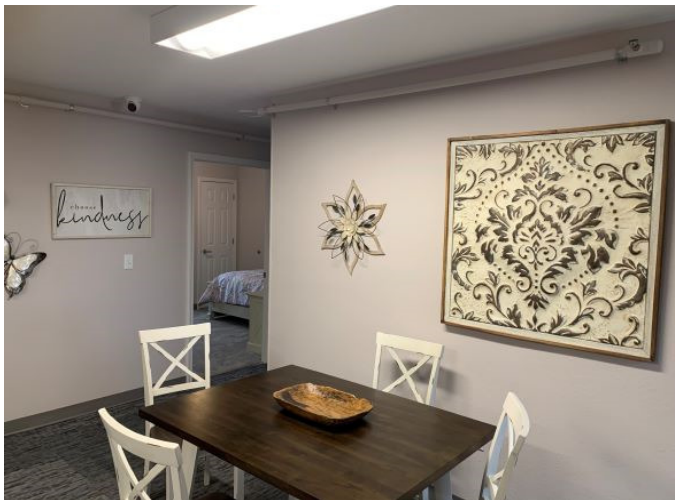
- Graduated High School – 1
- Started High School Diploma Program – 2
- Certified CNA – 2
- Started College – 1
- Completed Cass Co Program – 4
- Survivors Hired to RH – 2
- Survivors began working – 4

## RH Program

- 30-day graduates – 6
- 90-day graduates – 1
- 6-month graduates – 1
- One-year graduates – 4
- Program graduates – 4

## Group Hours (some are lower numbers due to length of group)

- Empowerment Coaching – 260
- Budget Coaching – 260
- Community Living – 260
- Healing Arts – 1040
- Equine – 52.5
- Life Skills – 1300
- Health/Wellness – 52
- Drug and Alcohol – 584
- Celebrate Recovery – 40
- Anger Management – 12
- Beyond Trauma – 14
- Battlefield of the Mind – 14
- Safe People – 18
- Small Animal Therapy – 52



# Capacity Growth, 2019-2022, Restoration House of Greater Kansas City

## Capacity Growth in the Time of COVID-19

Expansion and Continuous-Improvement Trajectory into Fully Trauma-Informed, Integrated, and Networked Practices for Restoration and Reintegration

### Adults

Restoration House Farms Opened 2020

#### Beds

2019	2020	2021	2022-23
Five	Six	Eighteen	Thirty Two

#### Human Capital (Staffing)

2019	2020	2021	2022-23
Full	Barebones	Interim	Full

#### Networks

2019	2020	2021	2022-23
Limited	Growing	Interim	Full, Tightly Coupled

### Minors

Mabee House Opened 2020

#### Beds

2019	2020	2021	2022-23
Zero, Under Construction	Seven	Seven	Fourteen

#### Human Capital (Staffing)

2019	2020	2021	2022-23
MBCH, Emerging	Interim	Full	Full

#### Networks

2019	2020	2021	2022-23
Emerging	Limited	Growing	Full, Tightly Coupled

MCBH = Missouri Baptist Children's Home

Capacity Growth

created with Plectica

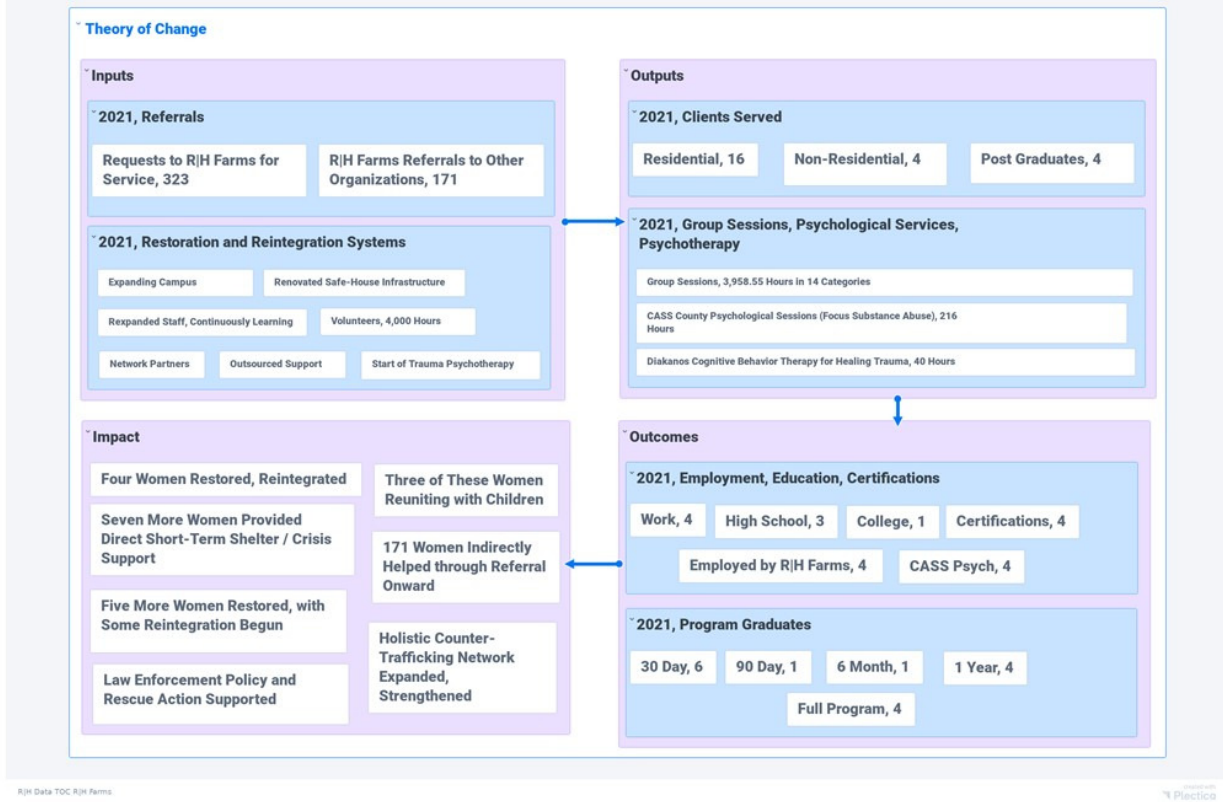
## Minor's Rescue and Restoration Services 2020-2021, Mabee House

Note on Inputs: Input also include Mabee House shelter, MBCH trauma-informed staff, and healing services. Those services include case management, therapy, medical, educational, and spiritual help. As a part of the healing process, the girls are actively involved in volunteering in the community through events such as a church fair, animal shelter, and they are also active in after school activities including choir, debate and other opportunities.



Note on Impact: "Move towards permanency" means that the client achieved permanency or made a move towards permanency; this can happen in several ways: (1) Client was reunified with parent(s); (2) Client was placed with a relative who now has legal guardianship of the girl; (3) Client was stepped down from residential to a foster family; (4) Parental rights were terminated and either a relative or foster family adopted the girl

# Adult Restoration and Reintegration Services 2021, Restoration House Farms



## In 2021, Restoration House participated in several special events..

- First Virtual Gala
- Golf Tournament held by North Heartland Community Church
  - Bluegrass Festival
  - Nashville Artists Against Trafficking Event
- First Annual Over the Edge Rappelling Event
- Ribbon Cutting at newly renovated space
- Maverick's Faceoff Against Trafficking Campaign



# Human Trafficking Trends *in* 2020

An analysis of data from the U.S. National Human Trafficking Hotline

In a year when everything from crime to commerce saw dramatic shifts, reports of human trafficking were most notable in 2020 for their consistency. Or, to put it another way, human trafficking appears to be pandemic-proof. That is one of three major categories of findings in Polaris’s analysis of data gathered over the calendar year 2020 from the U.S. National Human Trafficking Hotline.

## THE NUMBERS

Situations of trafficking identified: **10,583**

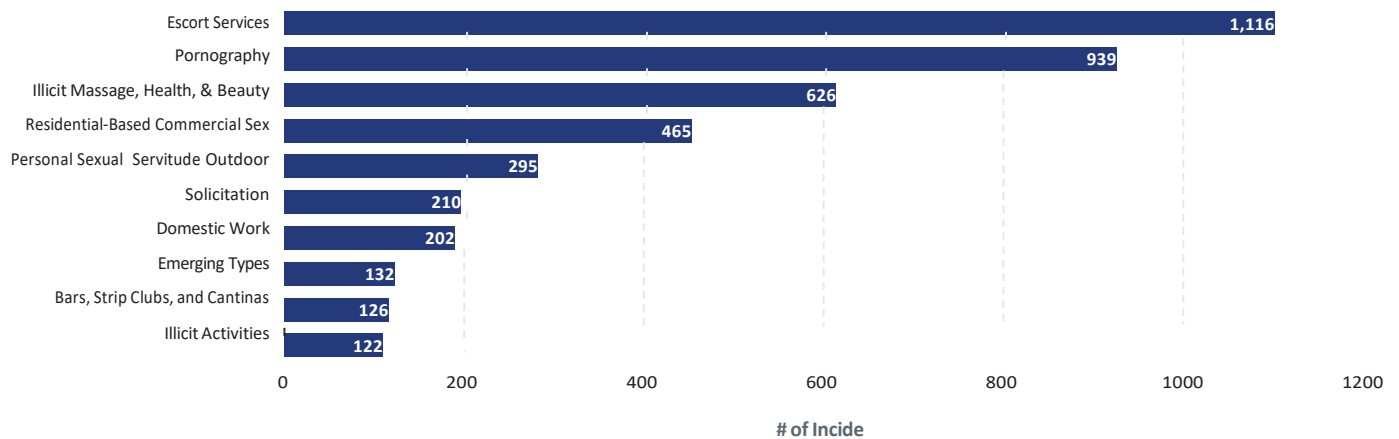
Sex	7,648
Labor	1,052
Sex & Labor	334
Other/Not Specified	1,549

Victims of trafficking identified: **16,658**

Sex	10,836
Labor	3,583
Sex & Labor	631
Other/Not Specified	1,634

## Top types

These types are as defined in Polaris’s report: [Typology of Modern Slavery: Defining Sex and Labor Trafficking in the United States](#)



Polaris is leading a data-driven social justice movement to build a world where the powerful cannot exploit the vulnerable for profit. We are working on solutions that mirror the scale of the problem – 25 million people worldwide deprived of the freedom to choose how they live and work. For more than a decade, Polaris has assisted thousands of victims and survivors through the U.S. National Human Trafficking Hotline, helped ensure countless traffickers were held accountable and built the largest known U.S. data set on actual trafficking experiences. With the guidance of survivors, we use that data to improve the way human trafficking is identified, how victims and survivors are assisted, and how communities, businesses and governments can prevent human trafficking by transforming the underlying inequities and oppressions that make it possible.